



# *Symphony Notes*

A publication of the Livermore-Amador Symphony and Guild

Vol. 56, No. 4, May 2019

## ***THE LIVERMORE-AMADOR SYMPHONY***

Arthur P. Barnes, Music Director Emeritus

*Presents*

### **Classical Contrasts**

**Lara Webber, Music Director & Conductor**

**Saturday, June 1, 2019, at 8:00 p.m.**

**BANKHEAD THEATER, 2400 First Street, Livermore  
Livermore Valley Performing Arts Center**

**Prelude talk 7:00–7:30 p.m.**

Doors open by 6:30 p.m.

**Lara Webber**

**Suite No. 2 for chamber orchestra**

**Igor Stravinsky**

**Piano Concerto No. 4**

**Ludwig van Beethoven**

Gwendolyn Mok, soloist

—————**Intermission**—————

**Symphony No. 4**

**Robert Schumann**

*The audience and performers are invited to enjoy cookies, coffee, cider, and sparkling wine after the concert in the lobby at a reception hosted by the Livermore-Amador Symphony Guild.*

#### **TICKET INFORMATION**

**Tickets are available at the Bankhead ticket office.**

**In Person:** Bankhead Theater Ticket Office, 2400 First Street, Livermore.

Tuesday through Saturday, Noon to 6 p.m.

**Website:** [www.bankheadtheater.org](http://www.bankheadtheater.org) **Phone:** 925-373-6800

Make checks payable to LVPAC.

♪ *A Note from Nancy McKenzie, LAS Guild President* ♪

Happy May! The good weather is back, and the Guild is as busy as ever.

The Guild's Spring Business meeting was held at Nan and Walt Davies' home April 18. We elected officers for 2019–2020: Kathy Streeter, President; Joan Green, Vice-president; Marcia Elchesen, Secretary; and Joan Dickinson, Treasurer. Marie Ruzicka and Mary Ann Johnston were elected to the Nominating committee. We had a wonderful turnout and all enjoyed the performance by trio Lisa Maher, flute; Eva Langfeldt, oboe; and Christy Diggins, clarinet.

In April the Symphony performed school concerts in Dublin and Pleasanton. New Guild member Sandra Hodzic and Association Board member Dean Simpson coordinated the lunch the Guild provided for the musicians between morning and afternoon performances. Big thanks to both of you!

At the Association Annual meeting on April 23, I presented a check for \$10,000 on behalf of the Guild to Association Board president Linda Tinney. Those who attended the April 13 LAS concert also saw the large ceremonial replica of this check presented from the stage of the Bankhead!

A big invitation goes out to all of you to join us at one of our monthly Guild board meetings. Check your Guild directory for dates and times. If you are interested in working on one of our Estate Sales, call Marie Ruzicka at 925-447-5521 or Leona Brush at 925-455-0870.

**Save these dates for Guild-sponsored events!**

♪ **Prelude Party, September 19:** The Guild holds its annual season kick-off that includes an update on Guild activities, plenty of time to socialize, and a performance. It is the perfect time to invite guests to introduce them to the Guild.

♪ **Sipping with the Symphony, September 26:** 3<sup>rd</sup> annual winetasting fundraiser at Page Mill Winery.

♪ **POPS Concert, October 25:** POPS Shoots for the Moon! celebrates the 50th anniversary of the moon landing. Come as your favorite moon person!

*I have thoroughly enjoyed my two years as Guild President. Thanks to all who have shared your valuable time supporting the efforts of the Guild.*

*See you at the LAS concert June 1!*

**Nancy McKenzie, Guild President**



**LVPAC Brilliance at the Bankhead Gala September 7!** Livermore-Amador Symphony will perform with Broadway and television star Matthew Morrison, best known as Mr. Schuester on the award-winning television show GLEE!

**The Guild will again underwrite the cost of providing a HARPIST at LAS concerts next season!**

**An Important Update!**  
**–Notice to Concert Ticket Holders–**  
**Can't use your concert tickets?**  
*The Bankhead Theater ticket office no longer processes returned LAS concert tickets as a donation to the Symphony. We suggest you consider offering your tickets to someone else who can use them.*

♪♪♪♪♪

*Symphony Notes* is published four times a year for members of the Livermore-Amador Symphony Association, Orchestra, and Guild. Symphony Association President Linda Tinney; Guild President Nancy McKenzie; Editor Marcia Stimatz Elchesen. PO Box 1049, Livermore, CA 94551-1049. 925-447-6454.  
Website: [www.livermoreamadorsymphony.org](http://www.livermoreamadorsymphony.org)

**Attention Facebook Users!**  
Like us on Facebook

*The Livermore-Amador Symphony is a Resident Company of the Bankhead Theater and a member of Livermore Cultural Arts Council (LCAC).*

## LAS June 1 Concert, “Classical Contrasts”—Beethoven’s Piano Concerto No.4

**GWENDOLYN MOK, Soloist**

Mok is Coordinator of Keyboard Studies at San Jose State University and a leading expert on the piano music of French composer Maurice Ravel. She has performed in many of the major concert halls in America, Europe, and Asia. She studied in the Julliard pre-college division from ages six to eighteen, then earned undergraduate degrees in music and psychology from Yale and a Doctor of Musical Arts from the State University of New York at Stony Brook. In 1994, she was selected to study with pianist Vlado Perlemuter, who had studied with Maurice Ravel. For six months she flew from New York to Paris to study with Perlemuter for a week at a time. Mok noted that Perlemuter was “quite old, almost ninety... Our lessons were very methodical and planned, sometimes two or three hours long. It was very rigorous training, but he wanted me to get things just right.”



“Beethoven’s music reflects the human condition so beautifully,” says Mok. “In this concerto, he speaks to a greater spirit. The concerto opens in a unique way—the pianist speaks alone in the softest and most intimate way. The second movement is amazing in that the pianist is pitted against the orchestra in the style of call and response. The orchestra begins in full voice, answered by the quiet but confident piano part. This ‘conversation’ continues in this manner until the orchestra is tamed into joining the pianist in a softer dynamic. The last movement is a rondo and is charming and virtuosic at the same time. Pianist pitted against the orchestra!”

### *Notes from Music Director Lara Webber*

#### **Stravinsky: Suite No. 2 for Chamber Orchestra.**

“This little suite is quirky and fun. The opening march grabs our attention with a fanfare in the brasses. The waltz is elegant and a bit dizzying with the perpetual pulsation of two clarinets. There is a delightful polka, and then an exuberant final ‘gallop’ that is very reminiscent of Stravinsky’s great ballet, *Petrushka*.”

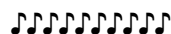
#### **Schumann: Symphony No. 4.**

“This symphony reveals the range of emotion and inner conflict the composer experienced throughout his troubled life. Within one turn of phrase we can hear jovial energy turn to a great conflict or threat. Anxiety can evolve into flirtatious love...all within a few phrases. This is a symphony, but it is through-composed, or played without pause between movements, and linked by thematic connections throughout that make it feel almost like a tone poem. It’s beautiful and profoundly personal.”

#### **Beethoven: Piano Concerto No. 4.**

Webber observes, “Beethoven’s fourth piano concerto is a transformational work, musically and emotionally. This lush, inventive music is full of beautiful surprises right from the beginning, with the soloist playing alone in G major, being answered by the orchestra in the warm unexpected key of B major. The extraordinary second movement is a dialogue between the lyrically expressive writing for solo piano and the harsh, strict music of the orchestral strings. From the quiet conclusion of this dark exchange emerges a wonderful rondo that begins with whispered energy, eventually bursting at the seams with joy.”

Webber is “thrilled to have the extraordinary opportunity to work with Gwendolyn Mok. Collaborating with an artist of her musical brilliance and stature is a privilege.”

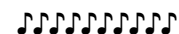


### **Livermore-Amador Symphony 2019–2020 Concerts**

**POPS Shoots for the Moon!  
October 25, 2019**

**Livermore Community Center**

**Season brochures available at the June 1 concert.**



### **Regular Concert Season**

**Bankhead Theater, Livermore**

**December 7, 2019      February 22, 2020**

**April 18, 2020      May 30, 2020**

**Renew your subscription now!**

**See Season Preview insert for details.**



## ***Guild Estate Sales***

**Money raised benefits LAS!**

**HELP SUPPORT THE GUILD'S EFFORTS!**  
***Income from estate sales is one of the primary ways the Guild raises money!***

Do you know anyone who is significantly downsizing or closing out a home? Please tell them about our Estate Sales. More information available on the LAS website at [livermoreamadorsymphony.org/estatesales](http://livermoreamadorsymphony.org/estatesales).

The Guild held a successful sale in April, thanks to volunteers **Dona Blackmore, Leona Brush, Bob Canning, Patty Canning, Adela Cook, Carol Counts, Nan Davies, Joan Dickinson, Patti Fredericks, Joan Green, Mary Jestice, Mary Ann Johnston, Sandy Lenoski, Pat Mann, Nancy McKenzie, Barbara Morrison, Janice Paquette, Cherie Jo Patenaude, Cherry Patterson, Marie Ruzicka, Lynn Seppala, Sarah Wharton, and Ayn Wieskamp.**

We have a few sale possibilities in the works, so keep an eye on your email for news!

*Marie Ruzicka and Leona Brush, Estate Sales Co-Chairs*

## **Guild Spring Luncheon May 15 Beeb's Banquet Facility**



Guild members enjoyed music, food, conversation, and a lovely view at a buffet luncheon organized by Patti Fredericks. Nan Davies made arrangements for entertainment by the Lachner Octet: Barbara Brown (flute), Eva Langfeldt (oboe), Christy Diggins and Cyndy Salmon (clarinet), Michael Garvey and Katie Brunner (bassoon), and Bob Satterford and Dave Lyons (horn). Music Director Lara Webber also popped by and profusely thanked outgoing President Nancy McKenzie and the Guild.

**Next Meeting: Guild Prelude Party September 19!**

→ Watch for details in August.



## ***Sipping With The Symphony***

**Thursday, September 26, 4:30–8:00 p.m.**  
**Page Mill Winery, Livermore**

### ***Sipping with the Symphony returns!***

Benefitting the Livermore-Amador Symphony, this will be an evening to enjoy wine tasting, snacks, a raffle, and musical entertainment. Your \$10 tasting fee and a portion of Page Mill's sales during the evening will help support LAS programs. Mark your calendar and invite your friends to join you!

→ Watch for details in August.

## ***New Opportunities to Support LAS***

### ***CHEF: Your Donation is Increased by 50%!***

**C**ommunity **H**ealth and **E**ducation **F**oundation. The Symphony recently became one of about 35 non-profits eligible for CHEF's matching grant money. Here's how it works. CHEF opens a new cycle on the 1<sup>st</sup> day each month: \$40,000 is available for individuals to donate to the organization(s) of their choice and is matched 50% by CHEF. For example, a \$100 donation to LAS would total \$150 with the CHEF match. Donations are made online via PayPal. Donor receives a receipt from CHEF; the Symphony receives the funds and the donor's contact information. In April, donations made to CHEF for LAS resulted in an additional \$1625 in matching funds! **The catch?** The \$40,000 gets donated quickly! Best to donate early the first day. **Next opportunity is June 1<sup>st</sup>.** <https://chefgivingcommunity.org/matching-program/>.

**Supporting Businesses:** Participants have agreed to make a donation to the Symphony when you do business with them. **You must mention at your first meeting that you heard about their services through the Livermore-Amador Symphony.** Current businesses are Re/Max Accord realty and Planet Home Lending.

Get more information from the LAS website home page. <http://livermoreamadorsymphony.org>.

**A Word of CAUTION:** When ordering tickets online for any performance at the Bankhead be sure to use the official website [www.bankheadtheater.org](http://www.bankheadtheater.org) or <https://lvpac.org>. The problem with Googling "LVPAC" or "Bankhead Theater" is that you may be led to a second-party seller site that offers tickets well over the Bankhead's price! For example, a site recently offered a LAS concert ticket for \$84, well above LAS's most expensive price of \$36. This could happen for any Bankhead tickets, not just LAS concerts. Of course, you can also buy tickets for Bankhead performances by visiting the box office or by phoning 925-373-6800. For LAS concert tickets, you may also access ticket information directly from our LAS website homepage:

<http://livermoreamadorsymphony.org> **Buy Tickets!**





### School Outreach Concerts in Dublin and Pleasanton

Since 2015, LAS musicians have performed concerts in local schools under the direction of Lara Webber. On April 18 and 25, thirty orchestra players volunteered time and talent at six performances, reaching over 1800 elementary students in Dublin and Pleasanton. The music included Haydn’s Cello Concerto in C, 1st movement, performed by 15-year old LAS competition winner Alexander Canicosa-Miles, Star Spangled Banner, Rossini’s *William Tell* Overture, Star Wars, and more. The program was tied to the common core curriculum, emphasizing critical thinking, imagery, and storytelling through music, with questions and student responses skillfully led by Webber. Between morning and afternoon concerts, musicians enjoyed a lunch break organized by Guild president Nancy McKenzie with assistance from Sandra Hodzic, Kathy Streeter, Dean Simpson, and Min Xu.



Association Board member Carol Boster, who helped arrange the Pleasanton assemblies, had this to say, “What a gift LAS has given to over 1000 Pleasanton students, acquainting children from kindergarten through fifth grade with the beauties of symphonic sound! The music filled the multi-purpose rooms of both schools with rich harmonic sounds full of rhythms appreciated by elementary age students. One could watch them wave their arms quietly to the beat, tap their laps, or even lightly clap to the piece. Many thanks to Lara Webber for creating a program so interesting to younger students, from Star Spangled Banner to Star Wars—May the force be with you!”

The concerts were made possible by several grants and were organized by LAS Association Youth Outreach committee members led by Beth Wilson. LAS principal horn Christine-Ann Immesoete helped arrange the Dublin assemblies. LAS plans to bring similar programs to schools throughout the Tri-Valley in the coming years!

#### Competition for Young Musicians Auditions on October 13, 2019

The competition is open to instrumentalists and vocalists who live in Alameda County, Contra Costa County, the City of Tracy, or the community of Mountain House, California. The maximum age is 19. The winner(s) will perform as soloist(s) with the Symphony at its concert on February 22, 2020, and will be awarded \$500. By September 8, applicants must submit a completed application form and fee, and a recording of their playing for preliminary screening. They may post a recording video to YouTube and send a link via email. Those who pass the screening will be invited to audition October 13. See application form and website for more details: <http://livermoreamadorsymphony.org/competition> .

*Jutta Massoud, Competition Chair*  
(925-525-6070 or [juttamassoud@comcast.net](mailto:juttamassoud@comcast.net))

#### Awards for High School Seniors Presentation at December 7th Concert

The Symphony Association administers four awards to recognize high school seniors who have made significant contributions to school and community musical activities. The awards are not based on students’ musical ability or plans to pursue further music education. Students who reside and/or attend school in Livermore, Pleasanton, Sunol, Dublin, or San Ramon, or who have actively participated as LAS musicians, are invited to apply for a \$400 award. Applications will be available in late August 2019 from the Symphony’s website at <http://livermoreamadorsymphony.org/awards> .

*Nissa Nack, Awards Chair*  
(925-484-1942 or [nissanack@comcast.net](mailto:nissanack@comcast.net))

**Livermore-Amador Symphony Youth Orchestra  
Free Summer Concert—Open to the Public!**

**Saturday, August 3, 2019 at 8:00 PM  
First Presbyterian Church, Livermore**

Livermore-Amador Symphony Association  
P. O. Box 1049  
Livermore, CA 94551-1049

Nonprofit  
Organization  
U.S. Postage Paid  
Livermore, CA  
Permit 120

RETURN SERVICE REQUESTED

SYMPHONY NOTES —

---

## Calendar

## June 2019 and Beyond

**Saturday, June 1, 2019**

See pages 1 and 3.

***Livermore-Amador Symphony Concert: Classical Contrasts***

***Gwendolyn Mok, piano***

**8:00 p.m. The Bankhead Theater, Livermore**

**Saturday, August 3, 2019**

See page 5.

**8:00 p.m. LAS Youth Orchestra Concert, First Presbyterian Church, Livermore**

**Thursday, September 19, 2019**

**Guild Prelude Party**

**3:30 p.m. Springtown Homeowners Assn., Livermore**

See pages 2 and 4.

**Thursday, September 26, 2019**

See pages 2 and 4.

**Guild Fundraiser: *Sipping With the Symphony***

**4:30–8:00 p.m. Page Mill Winery, Livermore**

**Friday, October 25, 2019**

See Season Preview insert and pages 2 and 3.

**POPS Concert: *POPS Shoots for the Moon!***

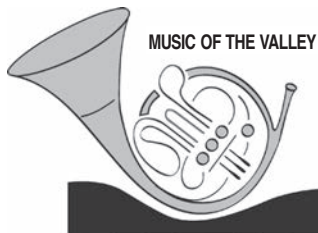
**8:00 p.m. Livermore Community Center (Doors open 7:00 p.m.)**

**Saturday, December 7, 2019**

See Season Preview insert and page 3.

***Livermore-Amador Symphony Concert: Winter Dreams***

**8:15 p.m. The Bankhead Theater, Livermore**



# Livermore-Amador Symphony 2019–2020 Season Preview

Lara Webber, Music Director & Conductor

Dr. Arthur P. Barnes, Music Director Emeritus



## POPS Shoots for the Moon! Friday October 25, 2019

Tickets on sale September 17: Call 925.447.6454

Premium—first two rows of tables:

\$50 each or \$350 for a table of 8

Premium tables include a bottle of wine and desserts.

Regular—all other tables:

\$35 each or \$245 for a table of 8

See [livermoreamadorsymphony.org/pops](http://livermoreamadorsymphony.org/pops)

The POPS concert is at the Livermore Community Center.

POPS tickets are not included in the subscription series.

## Saturday December 7, 2019

Concert begins at 8:15 p.m. (no Prelude talk)

Mozart: German Dance No. 3, "The Sleigh Ride"

Saint-Saëns: Carnival of the Animals

Tchaikovsky: Symphony No. 1, "Winter Dreams"

## Saturday February 22, 2020

Prelude talk, 7–7:30 p.m.; concert begins, 8 p.m.

Jason Klein, guest conductor

Suppé: Overture to *The Beautiful Galatea*

Raff: "Walpurgisnacht" from Symphony No. 8

Franck: *Le Chasseur maudit*

Plus solos by the winners of the 2019–2020  
Competition for Young Musicians

## Saturday April 18, 2020

Prelude talk, 7–7:30 p.m.; concert begins, 8 p.m.

Mozart: Overture to *The Abduction from the Seraglio*

Prokofiev: Piano Concerto No. 3

Frederic Chiu, soloist

Liadov: *The Enchanted Lake*

Stravinsky: *Firebird Suite*

## Saturday May 30, 2020

Prelude talk, 7–7:30 p.m.; concert begins, 8 p.m.

Gounod: *Petite Symphonie for Winds*

Debussy: *Sacred and Profane Dances*

Beethoven: *Symphony No. 7*

*Programs subject to change.*

Single-concert tickets available starting July 10, 2019  
at \$36, \$31, or \$26 for adults  
and \$12 for youth through age 21.

## Subscribe to the 2019–2020 Season!

Bring the order form to the June 1 concert or mail or  
take it to the Bankhead Theater Box Office,  
2400 First St., Livermore CA 94550.

(Season tickets are not available by phone or online.)

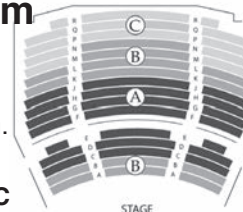
## Subscription Order Form

### Season Tickets

Dec., Feb., April, and May concerts.

Sections are defined on the diagram.

Youth are through age 21.



Section	A	B	C
ADULT	<input type="checkbox"/> \$125	<input type="checkbox"/> \$108	<input type="checkbox"/> \$87
YOUTH	<input type="checkbox"/> \$48	<input type="checkbox"/> \$48	<input type="checkbox"/> \$48

### EARLY PURCHASE SEASON TICKETS (June 1–July 9)

ADULT	<input type="checkbox"/> \$118	<input type="checkbox"/> \$102	<input type="checkbox"/> \$85
YOUTH	<input type="checkbox"/> \$48	<input type="checkbox"/> \$48	<input type="checkbox"/> \$48

### Donations

Please consider a tax-deductible contribution.

Donor levels: Angel, \$1500 or more;

Patron, \$1000–\$1499; Benefactor, \$500–\$999;

Sustainer, \$300–\$499; Supporter, \$200–\$299;

Contributor, \$100–\$199; Friend, \$50–\$99

Donations may be included with season-ticket orders or  
(preferred:) may be made directly to LAS by check or credit  
card; please see [livermoreamadorsymphony.org/donations](http://livermoreamadorsymphony.org/donations).

### Totals and Purchaser Info

Tickets: \$ \_\_\_\_\_

Donation (Thank you!): \$ \_\_\_\_\_

Tickets + Donation: \$ \_\_\_\_\_

Name(s) \_\_\_\_\_

Address \_\_\_\_\_

City \_\_\_\_\_

State/Zip \_\_\_\_\_

Telephone \_\_\_\_\_

E-mail \_\_\_\_\_

Current seat(s) \_\_\_\_\_

### Renewing?

- I want to retain my seat(s) from 2018–2019.  
**Retention of seats is guaranteed only for  
renewals received by July 9, 2019.**

### Payment Type

Write a check payable to **LVPAC** or pay by credit card:

Amex  Discover  MC  Visa

Account # \_\_\_\_\_

Exp. Date \_\_\_\_\_

Security Code \_\_\_\_\_

Signature: \_\_\_\_\_

For further information please call 925.447.6454 or see [livermoreamadorsymphony.org](http://livermoreamadorsymphony.org).